





Built on Trust, Driven by Excellence

Turning Dreams into Landmarks

At RISEIC Project LLP, we don't just build structures, we shape the future of industrial spaces. Since 2021, our mission has been to make industrial construction effortless through turnkey solutions that cover every aspect of your project. From civil construction, pre-engineered buildings, and industrial cranes to solar solutions, rolling shutters, doors and windows, electrical, and plumbing, we manage it all under one roof, ensuring a smooth, high-quality execution.

What sets us apart is not just our work, but the partnerships we build. With an experienced team and innovative technology, we take the complexity out of construction. Let RISEIC Project LLP elevate your project, where expertise meets execution, surpassing expectations and making your goals feel effortless.

Our Vision

Your Go-to Turnkey Partner

At RISEIC Project LLP, we are all about turning your vision into reality, from conceptualization to handover. With our seamless solutions and flawless execution, we're here to be your most trusted ally in every project journey.



Our Mission

Quality, On Time, Every Time

We are driven to deliver exceptional projects on time, blending engineering expertise and strategic project management to exceed expectations and guarantee customer satisfaction, every time. Quality and precision are our promises.

Our Team

Meet the Leaders Behind Our Success



Krishan Pathak,
Founder Director

A B.tech in Mechanical Engineering, Krishan is the visionary leader behind RISEIC Project LLP, blending engineering expertise with strategic insight to set new industry standards.



Ankit Singh Thakur,
Director – Sales & Marketing

With a BE and MBA, Ankit is the market strategist at RISEIC Project LLP, using his 15+ years in pre-engineering buildings to drive growth and forge strong client partnerships.



Alok Dave,
Director – Projects

Alok, a B.tech in Construction Management, brings 19 years of experience as our execution expert, ensuring flawless delivery of projects on time and within budget.



Vinay Goel,
Director – Projects

Engineering meets artistry. With 25+ years of experience, I blend precision and innovation to craft industrial project solutions that stand the test of time.

Tailored Industrial Construction Solutions

Ready for End-to-end Construction Excellence?

We have got the blueprints to make your project shine! From ground-up civil construction to full-on turnkey magic, we have got every phase covered. Our team's got the skills to turn your ideas into fast, flawless, and future-proof reality.

Explore our services and get your projects come live with precision, care, and expertise.





Building the Future, One Project at a Time
Current Endeavors Driving Progress

ONGOING PROJECTS

a. Chemco Plastic Moulding, Sanand

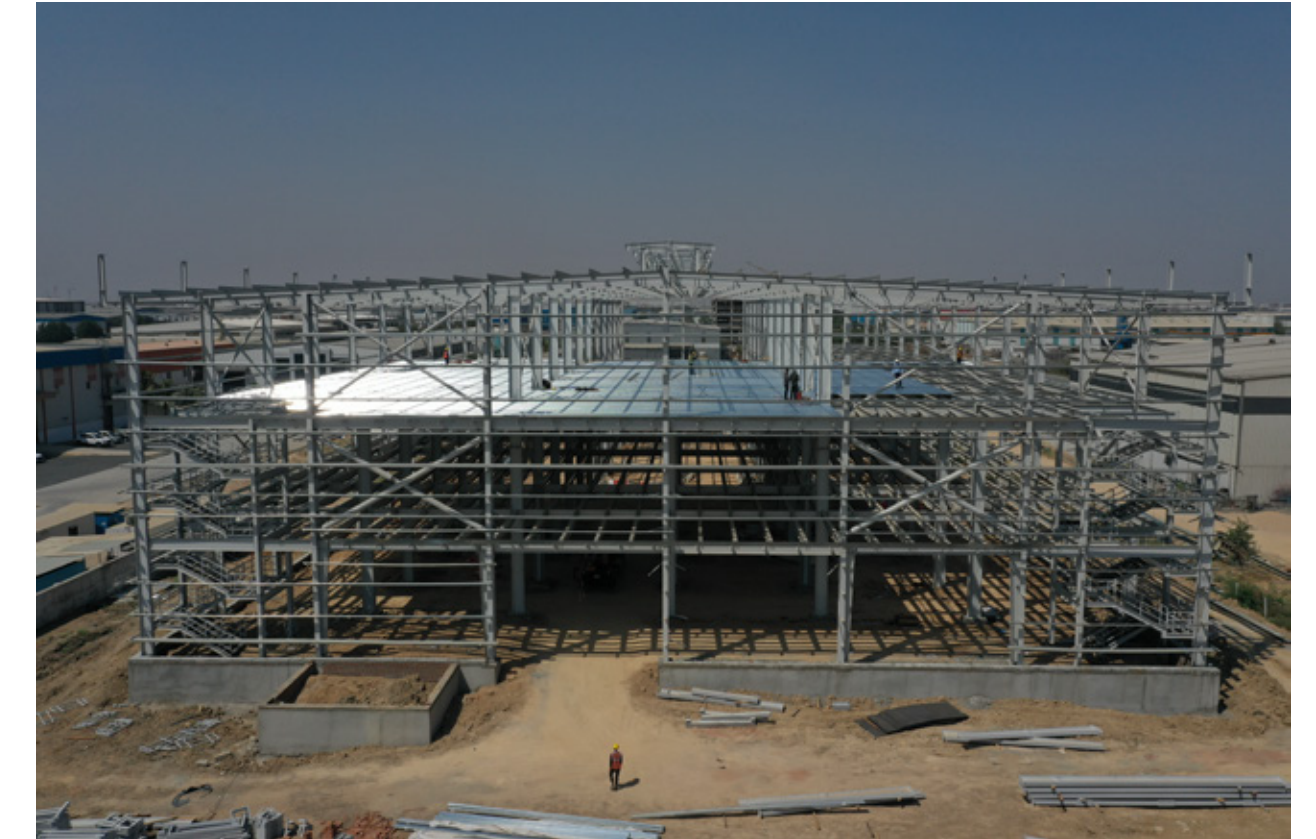
Comprehensive Construction and Infrastructure Development

Civil Work: Heavy-duty construction for a powerhouse facility

4500 SQM Factory Building: A spacious, high-tech space to fuel production

G+2 Mezzanine (4520 SQM): Smart design to stack up the usable space and future-proof the site

Infrastructure Development: Rock-solid infrastructure for smooth, uninterrupted operations



b. Vikram Thermo, Kadi

Crafting Excellence with Every Beam

Civil Work: Solid foundations to support the future

G+3 RCC Frame Structure: A sturdy 3-story frame built to last

Brownfield Project: Revamping the site into a high-efficiency hub

Steel Structural Shed Work: Tough steel sheds designed for durability and versatility



c. Vyara Tiles, Gangad

Building Strong Foundations with Precision

Civil Work: Solid groundwork for a top-notch facility

Compound Wall & Culvert: Secure walls and efficient drainage

Machine foundations: Stable bases for smooth machine performance

Weigh Bridge Foundation: Strong base for smooth weight measurements



d. Aerolam Insulations, Bhayla

Engineering Strength from the Ground Up

Area: 2500 SQM

Civil work: Structural base crafted for lasting durability

Brownfield Project: Seamless expansion over existing infrastructure

Weigh Bridge Foundation: Engineered support for accurate load assessment





Shaping Success with Every Build
Projects Finished, Impact Made

COMPLETED PROJECTS

a. AIRRO Engineering, Manjusar GIDC

Turnkey Project: Heavy-duty construction for a powerhouse facility

9000 SQM Factory Building: A spacious, high-tech space to fuel production

1000 SQM Office Building: Smart design to stack up the usable space and future-proof the site

4 Nos Cranes of 10MT: Rock-solid infrastructure for smooth, uninterrupted operations

10000 SQM Infrastructure Development: Rock-solid infrastructure for peak efficiency





b. Konart Steel Buildings, Bavla

Civil Work: Solid foundations for success

G+2 Labour Colony: Multi-story, efficient living quarters

Factory Buildings: Purpose-built, high-performance spaces

Infrastructure Development: Infrastructure that keeps operations flowing

8000 SQM Area: Ample space for peak productivity



c. Rama Watercoat, Kheda

Turnkey Project: From concept to completion, we've got it all covered

5500 SQM Factory Building: A spacious and efficient production powerhouse

2 Nos Cranes of 5MT: High-performance cranes for seamless lifting



d. Vyara Tiles, Sanand

Turnkey Project: No hassle, all solutions

1800 SQM Factory Building: Built for fast-paced production

Infrastructure Development: Rock-solid support for smooth ops

Equipment Foundation: Ready for heavy machinery action!





e. Chemco Plastics, Halol

Civil Work: Solid foundation for a high-efficiency plant

3200 SQM Factory Buildings: Optimized space for smooth, high-output operations

Factory Buildings: Designed for scalability and long-term performance

f. Shako Flexipack, Rajpur

Turnkey Project: All the heavy lifting done in one go, from A to Z

1000 SQM Factory Buildings: Smart, efficient space ready to roll

Factory Buildings: Built for flexibility and future growth, no sweat





g. Chemco Plastics, PE 3 Sanand

Civil Work: Durable foundation, built to last

2400 SQM Factory Building: Optimized for smooth production flow

Factory Building: Ready for high-output operations and constant growth





h. Chemco Plastics, PE 58 Sanand

Civil Work: Solid base for smooth operations

3400 SQM + 1700 SQM Mezzanine: Spacious and expandable, ready for more

Factory Buildings: Built for speed, scalability, and productivity



i. ALP Nishikawa, Sanand

Civil & Structure Work: Strong base for smooth sailing

900 SQM: Compact, yet mighty space

Mezzanine Inside: Extra vertical space for maximum flow



j. Grainspan Nutrients, Sonipath

Turnkey Project: All-in, from start to finish

3500 SQM Warehouse: Expansive, optimized for smooth storage flow



k. Dairy Den, Ahmedabad

Civil Work: Solid foundation for seamless performance

500 SQM Factory Building: Optimized space for maximum output

Infrastructure Development: Robust infrastructure to keep things flowing



Our Group of Companies

Innovating Across Sectors for Seamless Solutions



Riseic Interior Solutions Pvt. Ltd.

Delivering turnkey interior solutions for industrial, commercial, and residential spaces, blending function with style.



KONART Steel Buildings Pvt. Ltd.

Masters in Pre-Engineered Buildings and Steel Structures, delivering durable, high-performance solutions.



KRISSVENT Solutions

Specialists in HVLS fans and exhaust systems, engineered for top-notch air circulation and energy savings.



KONEX Material Handling Systems LLP

Your EOT cranes, goods lifts, and custom systems specialists, designed to optimize efficiency and streamline your workflow.



Got a Big Idea? Let's Build It!

Yes, you dream it, and we make it happen!

From steel structures to material handling systems and safety solutions, our team's expertise is here to turn your vision into a tangible, thriving reality.

asthakur@riseicproject.com | alok@riseicproject.com | www.riseicproject.com | 88667 18881 / 99798 97809

D-1508, Sun Central Place, Near Bopal Ambli Circle,
Ahmedabad - 380059